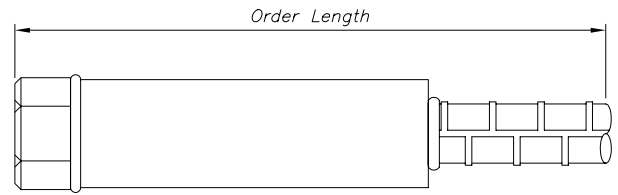
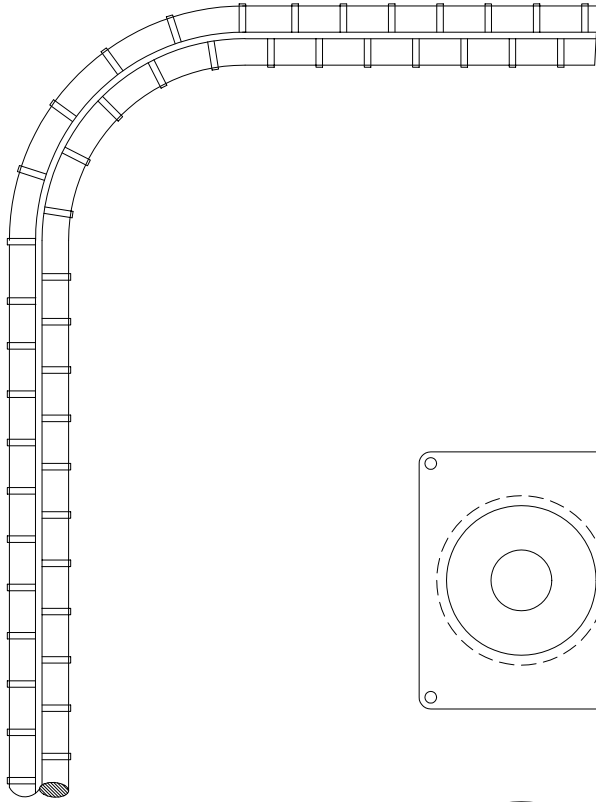
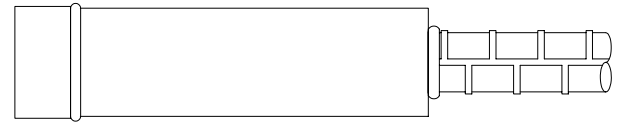


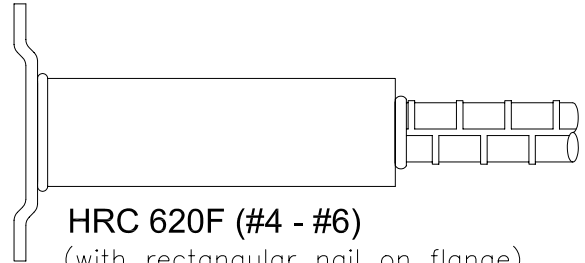
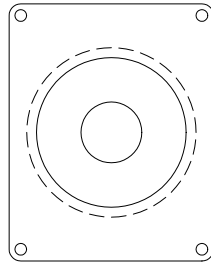
# HRC 620 Series



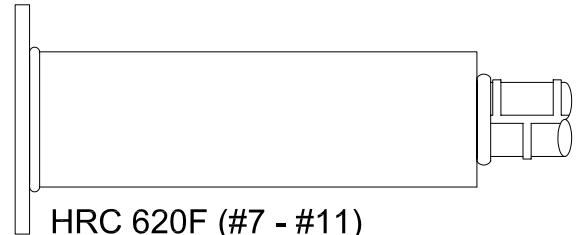
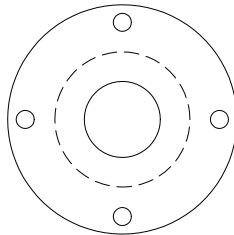
HRC 620T (#4 - #6)



HRC 620 (#7 - #11)

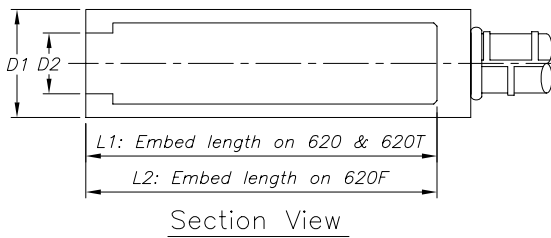


HRC 620F (#4 - #6)  
(with rectangular nail on flange)



HRC 620F (#7 - #11)  
(with round nail on flange)

:R/DRAWINGS 01/HRC STANDARDS/HRC 620 SPECS.DWG - May. 1, 2007



Note: Only to be used with HRC 601 or USP Structural Connectors CIA-Gel 7000.

PATENT PENDING

| BAR SIZE | D1  |       | D2 |        | Threads on D2 | L1        |       | L2  |       |     |
|----------|-----|-------|----|--------|---------------|-----------|-------|-----|-------|-----|
|          | in  | mm    | in | mm     |               | in        | mm    | in  | mm    |     |
| #4       | 12M | 1 1/8 | 29 | 5/8    | 16            | 3/4" X 10 | 3 1/4 | 83  | 3 1/4 | 83  |
| #5       | 16M | 1 1/4 | 32 | 3/4    | 19            | 7/8" X 9  | 3 3/4 | 95  | 3 3/4 | 95  |
| #6       | 19M | 1 1/2 | 38 | 7/8    | 22            | -         | 4 3/4 | 121 | 4 3/4 | 121 |
| #7       | 22M | 1 3/4 | 44 | 1      | 25            | -         | 5 1/2 | 140 | 5 1/2 | 140 |
| #8       | 25M | 2     | 51 | 1 3/16 | 30            | -         | 6 1/2 | 165 | 6 1/2 | 165 |
| #9       | 29M | 2 1/4 | 57 | 1 3/8  | 35            | -         | 7 1/2 | 191 | 7 1/2 | 191 |

20/Feb/06



## HEADED REINFORCEMENT CORP.

11200 Condor Avenue • Fountain Valley, CA 92708  
Tel: (714) 557-1455 • Fax: (714) 557-4460